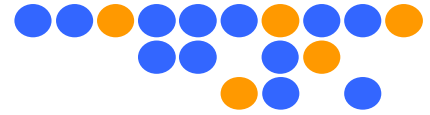


# 2.4mm Connector Data Sheet



## P2F-S00 Series

(2.4mm 2-Hole Panel Mount Jack)

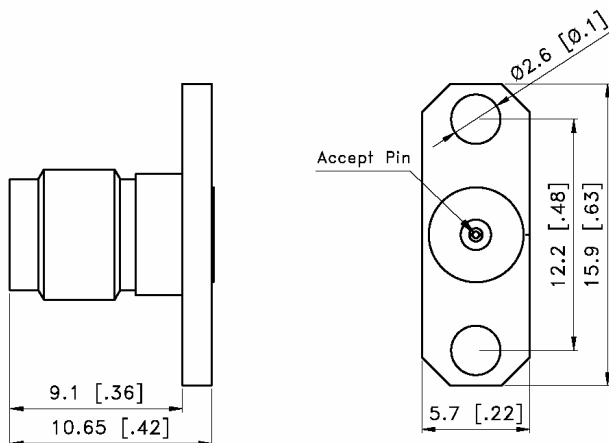


### Technical Data

<b>Electrical Data</b>	<b>Impedance</b>	50 Ω
	<b>Max. Frequency</b>	50 GHz
	<b>Insulation Resistance</b>	Min. 5 GΩ
<b>Environmental Data</b>	<b>Operating Temp.</b>	
	<b>RoHS</b>	Compliant

<b>Material Data</b>		<b>Material</b>	<b>Surface Plating</b>
	<b>Center Contact</b>	BeCu	Gold Plating on Ni
	<b>Body</b>	Stainless Steel	Passivated
	<b>Insulator</b>	Rigid Plastic	

### Outline Drawing



### Part Number

<b>Part No.</b> (OLD P/N)	<b>Accept Pin</b>	<b>Glass bead cut off frequency</b>
<b>P2F-S00-000</b> (OLD: P2F-S00-1cc)	0.30 [0.012]	50GHz
<b>P2F-S00-001</b> (OLD: P2F-S00-2cc)	0.38 [0.015]	28GHz
<b>P2F-S00-002</b> (OLD: P2F-S00-3cc)	0.46 [0.018]	18GHz
<b>P2F-S00-003</b> (OLD: P2F-S00-4cc)	0.51 [0.020]	8GHz

Unit : mm [inch]